



EPSILON

CRIOCABIN
TASTE PRESERVATION

РУССКИЙ ПРОЕКТ
www.rp.ru

► **COME CREARE UN AMBIENTE "COOL"**
Strumento ideale per soddisfare i nuovi concetti di vendita che si stanno affacciando nella ristorazione internazionale.

► **HOW TO CREATE A "COOL" AMBIENT**
The ideal tool for the satisfaction of the new sales concepts breaking through the international food and beverage sector.

► **COMMENT CREER UNE AMBIANCE "COOL"**
C'est l'outil idéal pour satisfaire les nouveaux concepts de vente qui se présentent dans le domaine international de la restauration.

► **WIE MAN EINE "COOLE" UMGEBUNG SCHAFFT**
Das ideale Werkzeug zur Befriedigung der neuen Verkaufskonzepte, die in die internationale Gastgewerbestätte vorkommen.



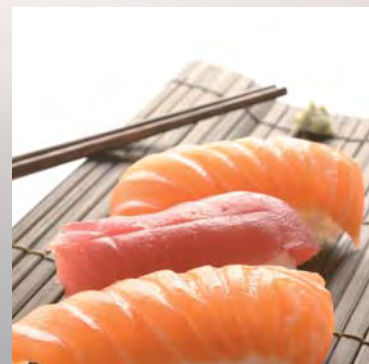


РУССКИЙ ПРОЕКТ
www.rp.ru







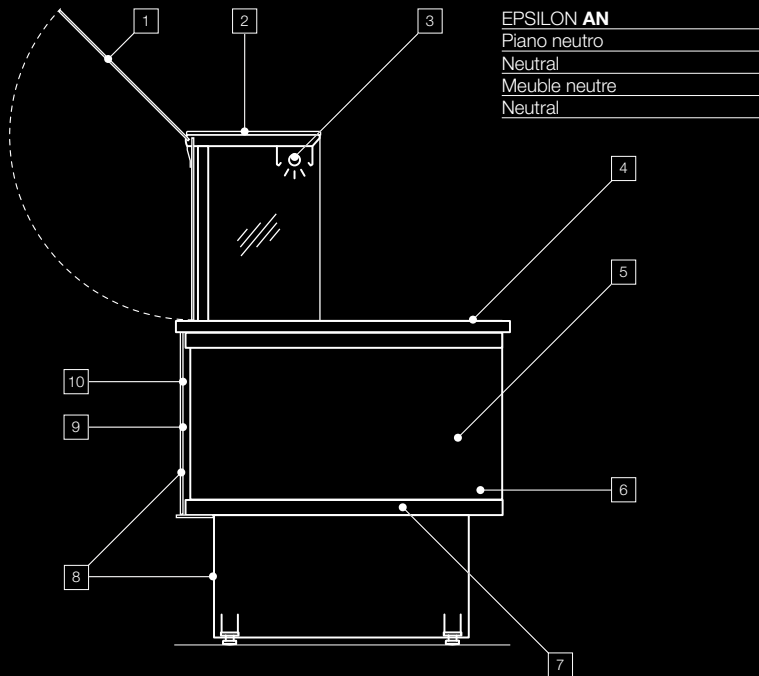


РУССКИЙ ПРОЕКТ
www.rp.ru









EPSILON AN
Piano neutro
Neutral
Meuble neutre
Neutral

CARATTERISTICHE DEL MOBILE

1. Vetri frontali apribili a pistoni.
2. Piano d'appoggio superiore fisso in vetro da 36 cm.
3. Illuminazione: tubo fluorescente con luce rosata Osram 76 (AN-AGN-ARV-AHC). (p)
4. Piano in agglomerato di quarzo (SILESTONE mod. Haiku). (p)
5. Riserva refrigerata a sportelli (ARV-APS).
6. Vani a giorno lato operatore (AHS-AHC-AHM-ANC).
7. Canalizzabile.
8. Frontale personalizzabile.
9. Angoli a spigolo; su richiesta eseguibili con qualsiasi gradazione.
10. Angoli arrotondati 22,5°.

CARACTERISTIQUES DE LA VITRINE

1. Vitres frontales, ouverture à pistons.
2. Plan d'appui supérieur fixe en verre de 36 cm.
3. Eclairage: tube fluorescent avec lumière rose Osram 76 (AN-AGN-ARV-AHC). (p)
4. Surface en quartz (SILESTONE mod. Haiku). (p)
5. Réserve réfrigérée à portillons (ARV-APS).
6. Réserve ouverte (AHS-AHC-AHM-ANC).
7. Canalisable.
8. Panneau frontale personnalisable.
9. Coins anguleux; sur demande tout degré d'inclinaison possible.
10. Angles sphériques 22,5°.

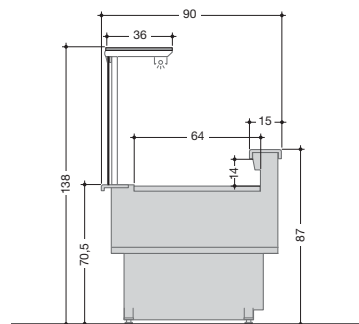
CABINET FEATURE

1. Front glasses, pistons opening.
2. Fixed 36 cm glass top surface.
3. Lighting: fluorescent tube with rose light Osram 76 (AN-AGN-ARV-AHC). (p)
4. Surface in quartz (SILESTONE mod. Haiku). (p)
5. Refrigerated understorage with small doors (ARV-APS).
6. Open understorage (AHS-AHC-AHM-ANC).
7. Multiplexable.
8. Customisable front part.
9. Angular corners; on demand any corner degree is possible.
10. Spherical corners 22,5°.

EIGENSCHAFTEN DES MÖBELS

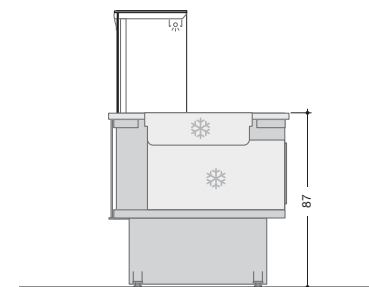
1. Frontglasscheiben mit Stossdämpfersöffnung.
2. Fix montierte, obere Ablage aus Glas, Breite: 36 cm.
3. Beleuchtung: Leuchtrohr mit rosa Lichtern Osram 76. (p)
4. Oberfläche aus Quarz (SILESTONE mod. Haiku). (p)
5. Lukenunterbaukühlung (ARV-APS).
6. Offener Abstellraum (AHS-AHC-AHM-ANC).
7. Zusammenbaubar.
8. Gestaltbare Frontblende.
9. Eckige Winkeln; auf Wunsch mit jedem Winkelgrad erhältlich.
10. Abgerundete Winkel 22,5°.

(p) Personalizzabile a richiesta / Customizable on request / Personnalisable sur demande / Auf Kundenwünsche anpassbar



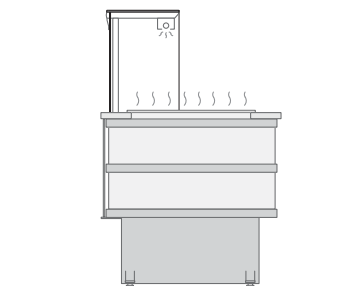
EPSILON AGN

Refrigerato per gastronomia.
Refrigerated for deli products.
Réfrigéré pour gastronomie.
Gekühlt für Feinkosten.



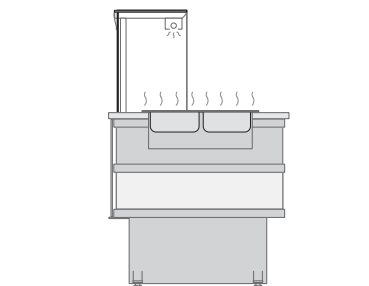
EPSILON ARV

Refrigerato Salad Bar.
Refrigerated, Salad Bar.
Réfrigéré, Salad Bar.
Gekühlt, Salad Bar.



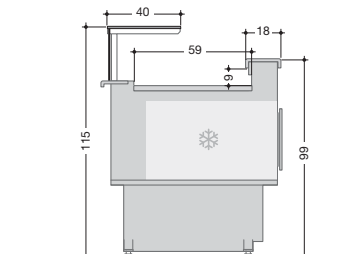
EPSILON AHS / AHC

Caldo piano riscaldato / Piano cottura in vetroceramica a induzione.
Hot, heated plate / Induction cooker in glass-ceramic.
Chaud, surface réchauffée / Cuisinière à induction en vitrocéramique.
Heiss, beheizte Oberfläche / Induktionskochfeld aus Glaskeramik.



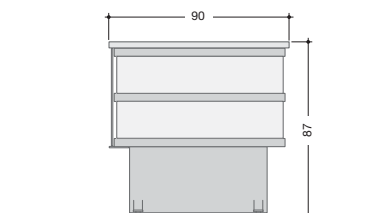
EPSILON AHM

Caldo bagno maria.
Hot bain-marie.
Chaud bain-marie.
Warm bain-marie.




EPSILON APS

Refrigerato per pasticceria.
Refrigerated for patisserie.
Réfrigéré pour pâtisserie.
Gekühlt für Konditorei.



EPSILON ANC

Service Point.



125424, г. Москва, Волоколамское шоссе, д. 88, стр. 8

Тел./факс: +74955404600

РУССКИЙ ПРОЕКТ
www.rp.ru